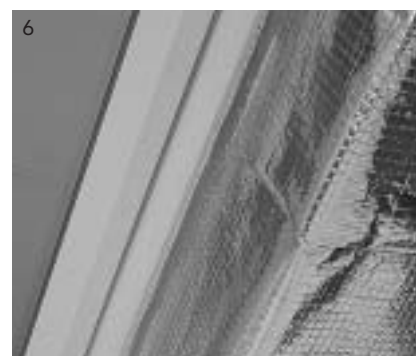
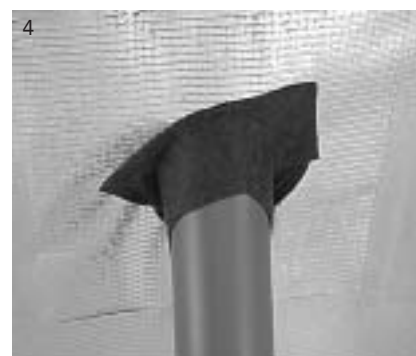


DELTA[®]-REFLEX

Installation Instructions

- 1. Place DELTA[®]-REFLEX below the insulation layer and fix with staples or wide-head nails. The aluminium-coated side should always face inward, i. e. away from the insulation. DELTA[®]-REFLEX can be installed either parallel or crosswise to the rafters.
- 2. Seal overlap joints by taping over with DELTA[®]-POLY-BAND.
- 3. When connecting sheet to plaster-finished gable walls, dress DELTA[®]-REFLEX approx. 15 cm onto the wall and apply DELTA[®]-TIXX sealant as a continuous 8 mm bead under the edge of the folded-back sheet. Level out uneven spots as necessary by generous application of sealant.
- 4. Use DELTA[®]-FLEXX-BAND to seal around pipe penetrations. Stretch the tape to adapt it to the contour of the pipe and the DELTA[®]-REFLEX sheet.
- 5. To join DELTA[®]-REFLEX to skylights or dormer windows, affix DELTA[®]-BUTYL-BAND double-sided adhesive tape onto the perimeter groove of the base frame and remove the upper backing.
- 6. Then press the DELTA[®]-REFLEX firmly onto the DELTA[®]-BUTYL-BAND and trim off sheet overhang.

You will find detailed installation instructions for DELTA[®]-REFLEX on the internet at www.doerken.de in the form of a PDF file for you to print out and save.



Fax: +49 23 30/63-355

Dörken GmbH & Co. KG
Wetterstraße 58
D-58313 Herdecke

Request for tender DELTA®-REFLEX/DELTA®-REFLEX PLUS

Item No.	Qty.	Specifications	Price/unit	Price total
1 m ²	<p>DELTA®-REFLEX sheet (manufacturer: Dörken GmbH & Co. KG, D-58311 Herdecke), to be supplied and installed as a vapour barrier sheet in accordance with DIN 4108 and manufacturer's specifications on inner side of insulation. Composite sheet consisting of polyester, aluminium and polyethylene layers with polypropylene grid reinforcement.</p> <p>Fire resistance Class E (EN 13501-1), B 1 rating (DIN 4102)</p> <p>Tensile strength approx. 450/400 N/5 cm (EN 12311-2)</p> <p>S_d value approx. 150 m</p> <p>Weight approx. 180 g/m²</p> <p>Special procedures to be followed in installation:</p> <ol style="list-style-type: none"> 1. Overlap of section sides to be at least 150 mm. 2. End overlap to be at least 200 mm; must always be located on rafter. 3. Overlap joints to be sealed airtight with 10 cm wide DELTA®-POLY-BAND adhesive tape (DIN 4108-7). 4. All connections and penetrations to incorporate airtight seals (DIN 4108-7). 		
2 m ²	<p>DELTA®-REFLEX PLUS sheet (manufacturer: Dörken GmbH & Co. KG, D-58311 Herdecke), to be supplied and installed as a vapour barrier sheet in accordance with DIN 4108 and manufacturer's specifications on inner side of insulation. Composite sheet consisting of polyester, aluminium and polyethylene layers with polypropylene grid reinforcement and integrated self-adhesive edge.</p> <p>Fire resistance Class E (EN 13501-1)</p> <p>Tensile strength approx. 450/400 N/5 cm (EN 12311-2)</p> <p>S_d value approx. 150 m</p> <p>Weight approx. 180 g/m²</p> <p>Special procedures to be followed in installation:</p> <ol style="list-style-type: none"> 1. Overlap of section sides to be at least 150 mm. 2. End overlap to be at least 200 mm; must always be located on rafter. 3. All connections and penetrations to incorporate airtight seals (DIN 4108-7). 		
3a m	Airtight connections to purlins, jamb walls, gable walls etc., to be carried out with DELTA®-TIXX sealant.		
3b m	Airtight connections to purlins, jamb walls, gable walls etc., to be carried out with clamp laths and DELTA®-KOM-BAND.		
3c m	Connections to jamb walls, gable walls etc., to be carried out with DELTA®-FLEXX-BAND. To be covered with airtight plaster coat.		
4	Airtight connections to skylights/dormer windows.		